

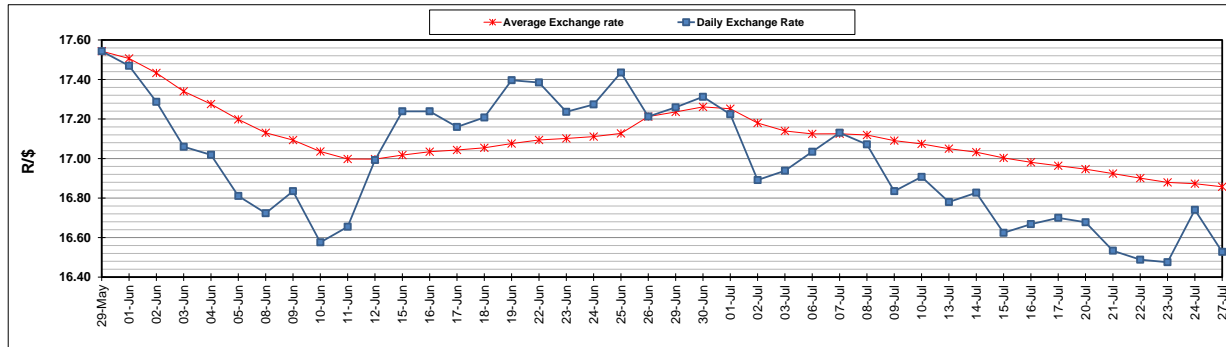
	PETROL 95 ULP	PETROL 93 ULP & LRP	DIESEL 0.05%	DIESEL 0.005%	ILL. PAR.
GAUTENG PUMP PRICE (SA c/l) AS FROM 01/07/2020	1,512.000	1,483.000	-	-	-
WHOLESALE PRICE (SA c/l) AS FROM 01/07/2020	-	-	1,303.560	1,307.960	703.828
SINGLE NATIONAL MAXIMUM RETAIL PRICE	-	-	-	-	882.000
BASIC FUEL PRICE - 27/07/2020 (SA c/l)	535.587	526.340	567.106	571.771	509.354
PRESS RELEASE CONTRIBUTION TO BFP 01/07/2020 - 27/07/2020 (SA c/l)	564.770	545.770	552.630	557.030	499.128
UNIT OVER/(UNDER) RECOVERY - 27/07/2020 (SA c/l)	29.183	19.430	(14.476)	(14.741)	(10.226)
AVERAGE BASIC FUEL PRICE 26/06/2020 - 27/07/2020	552.640	538.968	578.844	583.323	513.947
AVERAGE UNIT OVER/(UNDER) RECOVERY 26/06/2020 - 27/07/2020	(11.324)	(15.425)	(49.805)	(49.339)	(44.001)

### ANALYSIS MOVEMENT OF AVERAGE OVER/(UNDER) RECOVERY

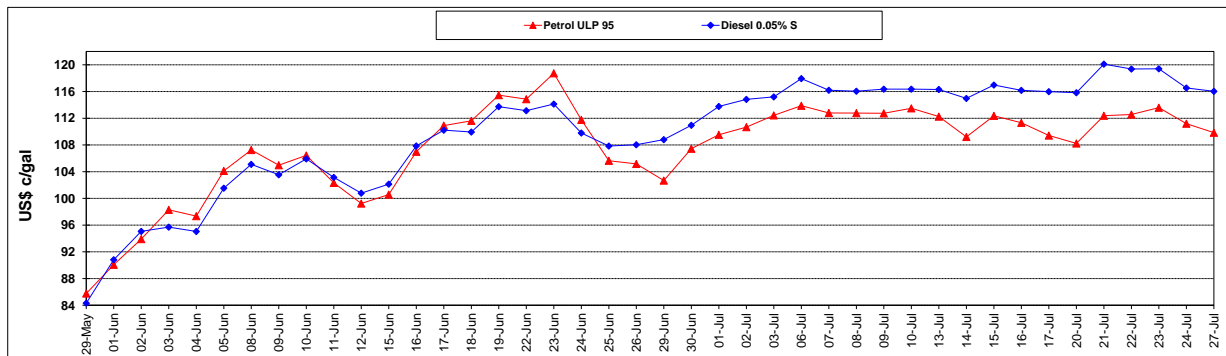
	PETROL 95	PETROL 93	DIESEL 0.05%	DIESEL 0.005%	ILL. PAR.
- MOVEMENT IN INTERNATIONAL PRODUCT PRICES	(20.173)	(24.054)	(59.073)	(58.678)	(52.230)
- MOVEMENT IN EXCHANGE RATE	8.848	8.629	9.268	9.340	8.229
AVERAGE UNIT OVER/(UNDER) RECOVERY 26/06/2020 - 27/07/2020	(11.324)	(15.425)	(49.805)	(49.339)	(44.001)

### R/\$ EXCHANGE RATE - (R/\$16.5275 - 27/07/2020)

#### EXCHANGE RATE USED IN BASIC FUEL PRICE



#### INTERNATIONAL PRODUCT PRICES OF BASKET USED IN BASIC FUEL PRICE



#### BASIC FUEL PRICE IN SA CENTS PER LITRE

